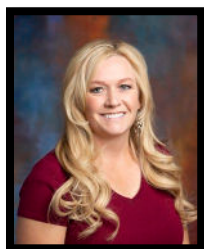


AGRICULTURE & HORTICULTURE

DEPARTMENT G



SUPERINTENDENT

MARY JENSEN

CELL NO.: 208-403-9746

ENTERING: Wednesday, August 27.....1:00 p.m. to 9:00 p.m.
Thursday, August 28.....8:00 a.m. to 9:00 a.m.

RELEASED: Sunday, September 7.....9:00 a.m. to 2:00 p.m.



ASSISTANT SUPERINTENDENT

SHARON JENSEN

CELL NO.: 208-681-1492

AUGUST/SEPTEMBER 2024						
SUNDAY	MONDAY	TUESDAY	WEDNESDAY	THURSDAY	FRIDAY	SATURDAY
August 24 th	25 th	26 th	27 th ENTERING: 1:00 pm to 9:00 pm	28 th ENTERING: 8:00 am to 9:00 am	29 th EISF BEGINS!	30 th PARADE @ 10:00 a.m.
August 31 st	1 st LABOR DAY!! Premium Payouts 10 am – 6 pm	2 nd Premium Payouts 10 am – 6 pm	3 rd Premium Payouts 10 am – 6 pm	4 th Premium Payouts 10 am – 6 pm	5 th Premium Payouts 10 am – 6 pm	6 th EISF ENDS! Premium Payouts 10 am – 6 pm
7 th Premium Payouts 10 am – 4 pm RELEASED: 9:00 am to 2:00 pm	8 th Premium Payouts 8:30 am – 7 pm @ Photography Dept. Building	9 th Premium Payouts 8:30 am – 4:30 pm @ EISF Main Office				

ENTRY FORMS & INFORMATION: Available online at www.funatthefair.com and select the **EXHIBITORS & COMPETITORS** button on the home page then scroll down to find your specific department. You may also contact the Eastern Idaho State Fair, 97 Park Street, PO Box 250, Blackfoot, ID 83221; email entries@funatthefair.com; or call EISF Office at 208-785-2480.

ENTRY DATE:

- Wednesday, August 27, 2025, from 1:00 p.m. to 9:00 p.m.
 - Exhibitors with more than 12 entries **MUST** enter on Wednesday, August 27, 2025.
 - EXHIBITORS IN CLASSES 5, 6, 153, 154 & 155 (MAMMOTH CLASSES) **MUST** ENTER ON AUGUST 27, 2025.
- Thursday, August 28, 2025, from 8:00 a.m. to 9:00 a.m. – see above restrictions.
 - No exhibits will be received after these hours.

ENTRY LOCATION: Eastern Idaho State Fair Harvest Plaza – Building No. 8 (third building on the east side of the Food Court) – please enter thru the north door.

ENTRY FEE: 1.00 each for the first 4 entries or \$5.00 per sheet

ENTRY FORM/TAGS:

- Entry Forms are available online and/or will be available at time of entering.

- There will NOT be any entry tags given out prior to entry day.

CASH PREMIUMS: will be available at Park Street-Payout Window, west of Main Gate No. 1.

- Monday, September 1 through Saturday, September 6, 2025, from 10:00 a.m. to 6:00 p.m.
- Sunday, September 7, 2025, from 10:00 a.m. to 4:00 p.m.
- Monday, September 8, 2025, from 8:30 a.m. to 7:00 p.m. at the Photography Dept. Bldg.
- After September 10, 2024, awards will be given out only during regular office hours and may be picked up at the E.I.S.F. Main Office, hours are 8:30 a.m. to 4:30 p.m. with lunch from 12:00 p.m. to 1:00 p.m. E.I.S.F. Main Office will also be closed on Friday, September 12, 2025, at 3:00 p.m. and will be closed on Monday, September 15, 2025, all day to observe the Labor Day Holiday for office employees. ***Premiums not claimed by September 29, 2025, will be considered a donation, and will revert to the EISF General Fund.***

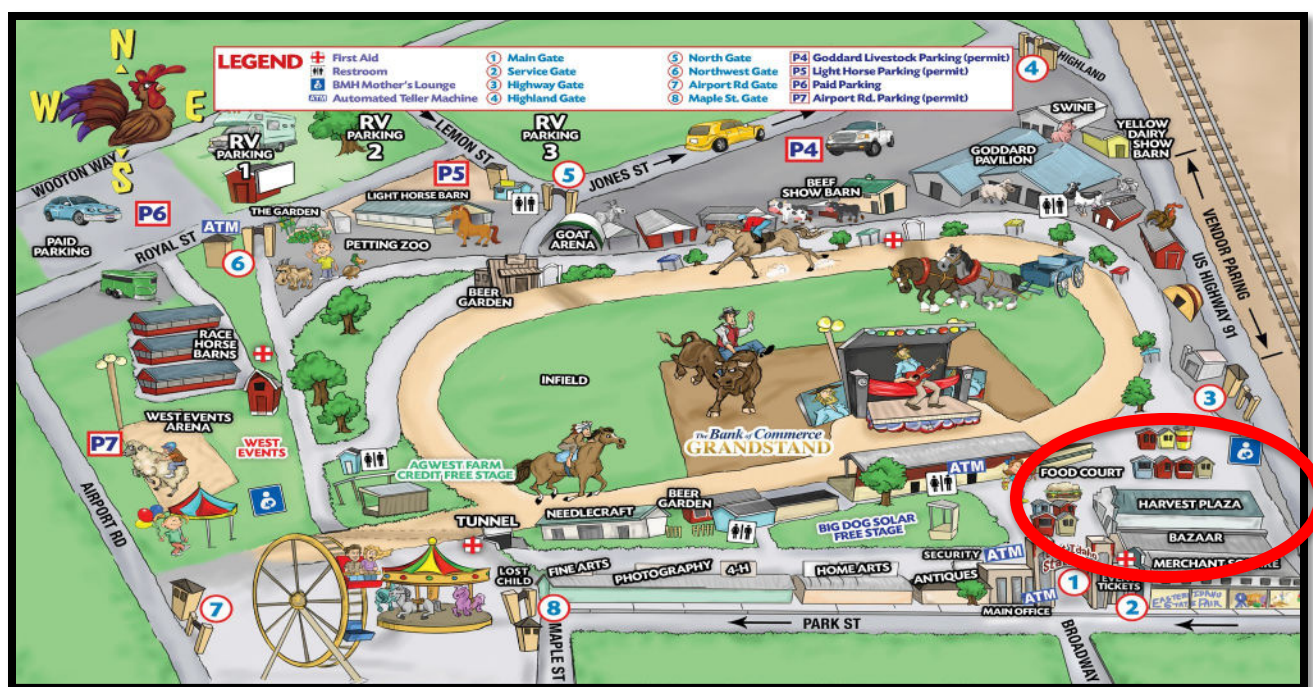
RELEASE DATE:

- Sunday, September 7, 2025, from 9:00 a.m. to 2:00 p.m.
- The fair will not be responsible for articles left after 2:00 p.m. on Sunday, September 7, 2025. ALL ITEMS LEFT AFTER 2:00 P.M. WILL BE DISPOSED OF.

SPECIAL DEPARTMENT RULES:

- Exhibits must be grown naturally within the 16 County Fair District in the current year by the person who is entering item.
- PRODUCE SHOULD BE CLEANED AND TRIMMED BEFORE BRINGING TO FAIRGROUNDS.
- If any item is entered that is out of the ordinary and is not listed in the exhibitor handbook, the exhibitor must bring in the seed package.
- No one under 12 years of age allowed in judging area.
- NO PREMIUM WILL BE PAID IF NO COMPETITION EXISTS, except Classes 5, 6, 100, 101 & 102 (Mammoth Classes), a competition consists of a minimum of three (3) or more entries in a single department class.
- Superintendent has the right to move an entry into a different class if the original entered class will not have enough entries for a competition to exist.
- Superintendent will be the only person authorized to change class entries.
- Awards will be made according to the merits of the entry. If the judge decides an entry is not worthy of 1st place, the judge may disqualify the entry or the judge can choose to award 2nd place, or 3rd place, this is at the judge's discretion.
- If there is no competition for an entry, but the judge still deems that the entry would have been worthy of a blue ribbon it can still be considered for any Department Special Awards.
- Only one of each placing in any one class will be awarded, unless otherwise specified in Department Special Rules.
- The Superintendent reserves the right to limit the number of entries entered by an exhibitor.
- The EISF is not responsible for merchants failing to honor their commitments of additional prizes to exhibitors.
- ADDITIONAL INSTRUCTIONS: See "EASTERN IDAHO STATE FAIR 2024 GENERAL RULES".

2025 EASTERN IDAHO STATE FAIR MAP



***PLEASE PARK ON PARK STREET ON ENTRY DATES. NO PARKING INSIDE OF FAIRGROUNDS, UNLESS UNLOADING MAMMOTH ENTRIES, THEN MAXIMUM 15 MINUTE UNLOAD ONLY. ***

SPECIAL AWARDS – ADULT DIVISION

Class 200. ***CHAMPION – MOST ENTRIES FROM SINGLE EXHIBITOR**

Class 201. ***CHAMPION – MOST ENTRIES FROM A FAMILY**

(Will include Minor Children & Parents only)

\$12.00 AWARD

Class 202. ***RUNNER UP – MOST ENTRIES FROM SINGLE EXHIBITOR**

Class 203. ***RUNNER UP – MOST ENTRIES FROM A FAMILY**

(Will include Minor Children & Parents only)

\$8.00 AWARD

(ALL PREMIUM PAYOUTS WILL BE UNDER THE NAME OF THE PARENT.)

ADULT DIVISION

AGE 12 and OLDER

DIVISION A – AGRICULTURE

SPECIALTY ITEMS

1. Individual Garden Display
1st place - \$15.00 and Special Prize; 2nd place - \$10.00; 3rd place - \$7.00
 - Only one entry per garden.
 - Points will be determined by ribbon count.
2. “BOUNTY OF THE FIELD BASKET”
1st place - \$20.00 and Special Prize; 2nd place - \$15.00; 3rd place - \$10.00
 - In “1/2 Bushel Basket” or similar size basket Must include eight (8) different items, to include fruits, vegetables and grains
 - **Must enter in at least 5 (five) additional Agriculture & Horticulture classes**
 - Must be grown by exhibitor
 - Not to exceed 18” overall dimensions.
 - Not over 15 lbs.
3. Wall Hanging
1st place - \$8.00; 2nd place - \$5.00; 3rd place - \$4.00
 - Not to exceed 18” overall dimensions.
 - Not over 10 lbs.
4. Decorated Potato
1st place - \$8.00; 2nd place - \$5.00; 3rd place - \$4.00
 - MUST BE ABLE TO SEE POTATO
 - Adults must use regular russet potato.



Premium Class 5:

- 1st place - \$50.00; 2nd place - \$25.00; 3rd place - \$15.00**
- NO ENTRY LIMIT REQUIREMENTS FOR COMPETITIONS IN CLASS 5
 - Squash must weigh a **minimum of 50 lbs.** to enter Mammoth Class 5

5. Mammoth, Squash

Premium Class 6:

- 1st place - \$200.00 + Special Prize; 2nd place - \$100.00; 3rd place - \$50.00**
- Pumpkins will be weighed upon entry into E.I.S.F. Harvest Plaza – Building No. 8 and then will be placed on display in the designated area.
 - NO ENTRY LIMIT REQUIREMENTS FOR COMPETITIONS IN CLASS 6
 - Pumpkin must weigh a **minimum of 180 lbs.** to enter Mammoth Class 6

6. Mammoth, Pumpkin

FIELD CROPS

Premium Class 7:

1st place - \$5.00; 2nd place - \$3.00; 3rd place - \$2.00

- *Leave ½ inch stem at butt. Remove husks, do not trim tops*

7. Corn, Field (mature) – 5 ears

Premium Class 8:

1st place - \$5.00; 2nd place - \$3.00; 3rd place - \$2.00

- *Sheaves should be of mature grain peeled*
- *Head of sheaf must be together as a group*

8. Sheaf of oats, barley or wheat – Stalk measure – 2½ to 3½ inches

Premium Classes 9-10:

1st place - \$5.00; 2nd place - \$3.00; 3rd place - \$2.00

9. Sheaf of alfalfa hay – Stalk

10. Sugar Beets – 2

Premium Classes 11 - 16:

1st place - \$5.00; 2nd place - \$3.00; 3rd place - \$2.00

- *Roots: Should be brushed with soft brush and dirt removed*

11. Potatoes, any – 5

12. Potatoes, Red – 5

13. Potatoes, Russet – 5

14. Seed Potatoes, any – 10

15. Seed Potatoes, Red – 10

16. Seed Potatoes, Russet – 10

SUMMER VEGETABLES

Premium Classes 20 - 39:

1st place - \$5.00; 2nd place - \$3.00; 3rd place - \$2.00

- **Classes 17 - 21 – Must have stems**

20. Squash, Crookneck, Any – 3

21. Squash, Zucchini, Any, under 10 inches – 3

22. Squash, Zucchini, Any, 10 to 15 inches – 3

23. Squash, Zucchini, Any, over 15 inches – 3

24. Squash, Bush Scallops – 3

- **Classes 22 - 36 – Must have stems**

25. Peppers, Bell Green – 5

26. Peppers, Chili – 5

27. Peppers, Jalapeno – 5

28. Peppers, Yellow, long – 5

29. Peppers, Green, long – 5

30. Peppers, Any Other – 5

31. Eggplant – 3

32. Tomatoes, Red slicing – 5

33. Tomatoes, Roma – 5



34. Tomatoes, Cherry, any – 5
35. Tomatoes, Pear – 5
36. Tomatoes, Green – 5
37. Tomatoes, Tomatillo – 5
38. String Beans, any – 10 pods
39. Sunflower, garden (*stems not to exceed 6 inches*) – 2



FALL VEGETABLES

Premium Classes 50 - 69:

1st place - \$5.00; 2nd place - \$3.00; 3rd place - \$2.00

- **Classes 50** – *Leave ½ inch stem at butt. Remove husks, do not trim top*
- 50. Corn, Sweet (current) – 5 ears
 - **Classes 51 - 53** – *Should leave 1" top & must leave tails on*
- 51. Beets, any – 5
- 52. Carrots, any – 5
- 53. Parsnips, any variety – 5
 - **Classes 54 - 62** – *Should leave 1" top & most of roots on (Remove dirt only to clean)*
- 54. Onions, yellow, *PARTLY CURED (do not peel)* – 5
- 55. Onions, white, *PARTLY CURED (do not peel)* – 5
- 56. Onions, purple, *PARTLY CURED (do not peel)* – 5
- 57. Garlic – 5
- 58. Green Onions – 5 (*Leave tops on, similar to store bought onions*)
- 59. Cabbage, any – (*Clean, remove leaves, 2 heads only 1-inch root*)
- 60. Brussel sprouts – 5
- 61. Broccoli – 1 Head
- 62. Cauliflower – 1 Head
 - **Classes 63 - 69** – *Must have stems attached*
- 63. Cucumbers, for pickling, 3 to 5 inches – 5
- 64. Cucumbers, for slicing, 5 to 7 inches – 5
- 65. Cucumbers, Armenian – 3
- 66. Cucumbers, other – 3
- 67. Cantaloupe – 2
- 68. Watermelon – 2
- 69. Honeydew Melon – 2

WINTER VEGETABLES

Premium Classes 80 - 89:

1st place - \$5.00; 2nd place - \$3.00; 3rd place - \$2.00

- **Classes 80 - 89** – *Must have stems attached*
- 80. Gourd - 2
- 81. Pumpkins, Jack-O-Lantern – 2
- 82. Pumpkins, Lumina – 2
- 83. Squash, Spaghetti – 2
- 84. Squash, Butternut – 2
- 85. Squash, Acorn – 2
- 86. Squash, Sweet Meat – 2
- 87. Squash, Buttercup – 2

- 88. Squash, any Hubbard – 2
- 89. Squash, Pink Banana – 2

DIVISION B - HORTICULTURE

Premium Classes 100 – 112:

1st place - \$5.00; 2nd place - \$3.00; 3rd place - \$2.00

- **Classes 100 - 104** – *Plate of 5 with the stem on*
- 100. Apples, any – 5
- 101. Crab Apples, any – 5
- 102. Peaches, any – 5
- 103. Pears, any – 5
- 104. Rhubarb, any, PULL trim 1 inch on top – 5 Stalks
- **Classes 105 - 107** – *Plate of 5 with the stem on*
- 105. Plums, any – 5
- 106. Prunes, any – 5
- 107. Grapes, – 4 clusters, any
- **Classes 108 - 110** – *Berries may be removed if necessary*
- 108. Strawberries, *stems on* – plate of 10
- 109. Raspberries, *mature* – plate of 10
- 110. Blackberries, *mature* – plate of 10
- **Classes 111 - 112** – *should be in clear one-pint jar*
- 111. Creamed honey – one-pint jar
- 112. Raw Honey – one-pint jar

DIVISION C - LARGEST SPECIMEN DIVISION

Premium Classes 120 – 140:

1st place - \$7.00; 2nd place - \$5.00; 3rd place - \$3.00

- *Must have stems, be clean, and remove dirt*
- *1-inch TOP & ROOTS ON*
- 120. Russet Potato
- 121. Table Beet
- 122. Potato, Red
- 123. Zucchini
- 124. Ear of Corn, Sweet
- 125. Tomato
- 126. Watermelon
- 127. Sunflower – 6-inch stem only
- 128. Garlic
- 129. Onion
- 130. Sugar Beet
- 131. Hubbard Squash
- 132. Banana Squash
- 133. Pumpkin
- 134. Pepper
- 135. Cucumber



- 136. Carrot
- 137. Cantaloupe
- 138. Turnip
- 139. Cabbage
- 140. Gourd

JUNIOR DIVISION

AGE 11 and UNDER

DIVISION D

REQUIRMENTS:

- *Refer to Adult Division for specific rules.*

Premium Classes 150 – 152:

1st place - \$20.00; 2nd place - \$10.00; 3rd place - \$8.00

- *Entries must be in an “¼ Bushel Basket” or similar size basket*
- *Entries must be a mixture of a minimum of **six (6)** different types of home-grown fruits and vegetables*
- ***ENTRIES MUST HAVE A 50+ WORD ESSAY or a DRAWING ABOUT THE GROWING PROCESS AND WHAT THEY LEARNED FROM TAKING CARE OF THEIR GARDENS.***
- *CLASS 150- 152 – PARENTS CAN HELP WRITE ESSAY WITH CHILDREN.*
- *Must be grown by exhibitor*
- *Not to exceed 15” overall dimensions.*
- *Not over 10 lbs.*

150. “BOUNTY OF THE FIELD BASKET” – Ages 3 to 5

151. “BOUNTY OF THE FIELD BASKET” – Ages 6 to 8

152. “BOUNTY OF THE FIELD BASKET” – Ages 9 to 11

Premium Classes 153 – 155:

1st place - \$40.00 and Special Award; 2nd place - \$20.00; 3rd place - \$10.00

- Pumpkins will be weighed upon entry in Agriculture Building and then placed on display in designated area.
- NO ENTRY LIMIT REQUIREMENTS FOR COMPETITIONS IN CLASSES 100, 101 & 102 (Mammoth Classes)
- Pumpkins must weigh a minimum of **50 lbs.** to enter Mammoth Classes

153. Mammoth Pumpkin – Ages 3 to 5

154. Mammoth Pumpkin – Ages 6 to 8

155. Mammoth Pumpkin – Ages 9 to 11

Premium Classes 156 – 161:

1st place - \$5.00; 2nd place - \$3.00; 3rd place - \$2.00

- *Classes 156 - 158 – must be able to see potato.*
- *Classes 156 - 158 – must use regular Russet Potato.*

- 156. Decorated Potato – Child – Ages 3 to 5
- 157. Decorated Potato – Child – Ages 6 to 8
- 158. Decorated Potato – Child – Ages 9 to 11
- 159. Jack-O-Lantern – Colored or Decorated – Ages 3 to 5
- 160. Jack-O-Lantern – Colored or Decorated – Ages 6 to 8
- 161. Jack-O-Lantern – Colored or Decorated – Ages 9 to 11



Premium Classes 162 – 176:

1st place - \$5.00; 2nd place - \$3.00; 3rd place - \$2.00

- *Pumpkins, Squash, and Melons require 2 individual items per entry*
- *All other Fruits and Vegetables require 3 individual items per entry*

- 162. Vegetable – Summer – Ages 3 to 5
- 163. Vegetable – Summer – Ages 6 to 8
- 164. Vegetable – Summer – Ages 9 to 11
- 165. Vegetable – Fall – Ages 3 to 5
- 166. Vegetable – Fall – Ages 6 to 8
- 167. Vegetable – Fall – Ages 9 to 11
- 168. Vegetable – Winter – Ages 3 to 5
- 169. Vegetable – Winter – Ages 6 to 8
- 170. Vegetable – Winter – Ages 9 to 11
- 171. Fruit – Tree Grown – Ages 3 to 5
- 172. Fruit – Tree Grown – Ages 6 to 8
- 173. Fruit – Tree Grown – Ages 9 to 11
- 174. Fruit – Vine/Bush Grown – Ages 3 to 5
- 175. Fruit – Vine/Bush Grown – Ages 6 to 8
- 176. Fruit – Vine/Bush Grown – Ages 9 to 11



Class 204.

SPECIAL AWARD—JUNIOR DIVISION

SUPERINTENDENT'S CHOICE

6 RIDE PUNCH CARD FOR THE CARNIVAL

SPECIAL AWARDS—JUNIOR DIVISION

Class 205.

CHAMPION – MOST ENTRIES FROM SINGLE EXHIBITOR

\$10.00 AWARD